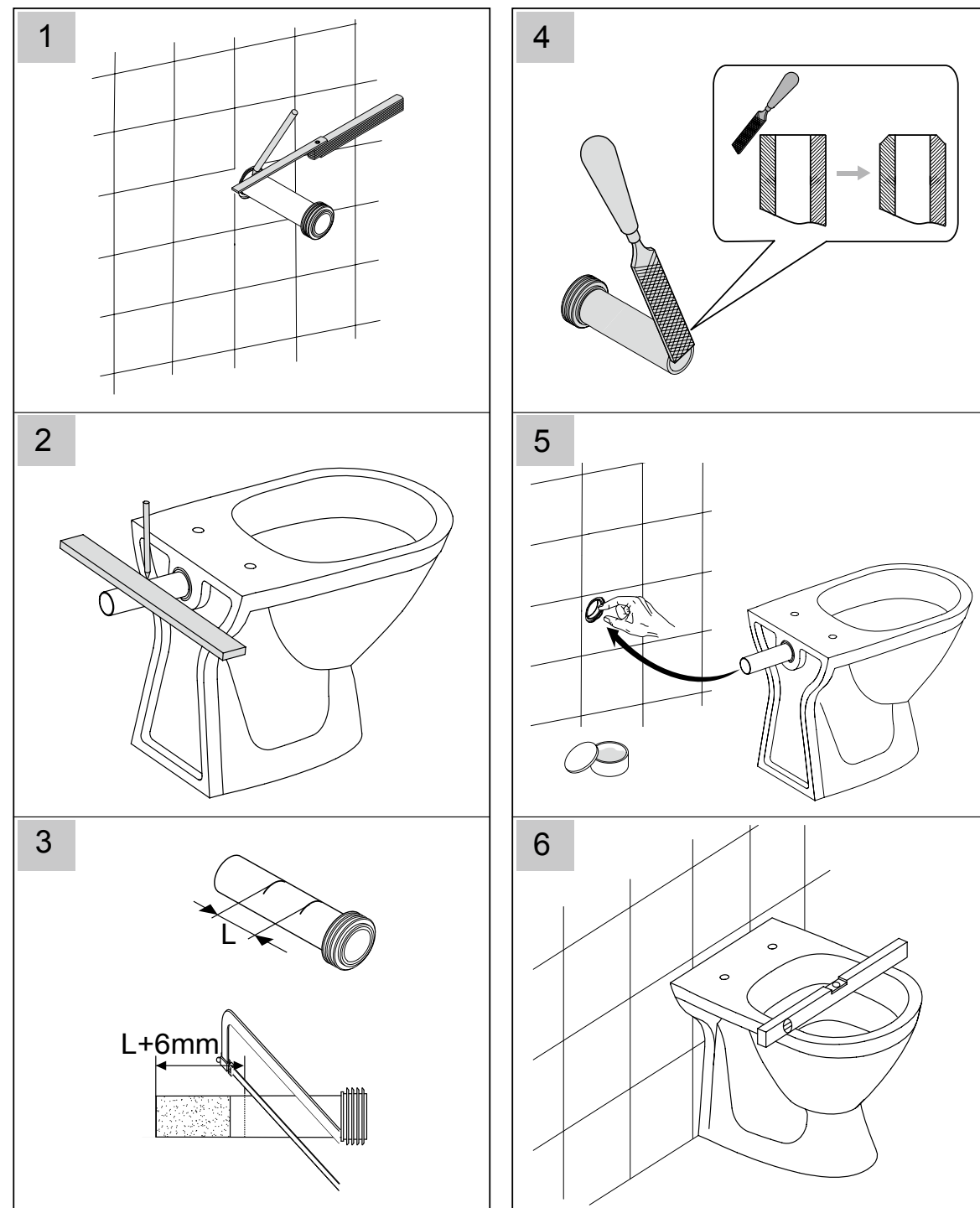


ET4-40C

CONCEALED CISTERN

INSTALLATION INSTRUCTIONS



ET4-40C

CONCEALED CISTERN

INSTALLATION INSTRUCTIONS



FEATURES & BENEFITS

- In-wall cavity dual flush cistern
- For use with ET4-40P sensor plate
- Cistern thickness 78mm
- Top water supply
- Flush pipe, seals & fixings included
- Accessible bathrooms
- 4 STAR WELS water rating

WARRANTY

1 Year Parts Warranty

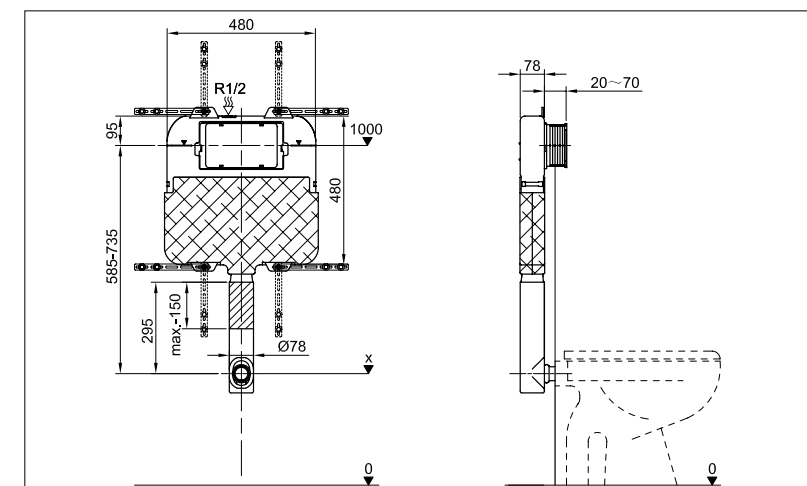
This parts warranty covers this product against manufacturing faults in the construction, material and assembly of products for a period of 1 year from the date of purchase.

Warranty Conditions

- This parts only warranty will apply only under all of the following conditions:
- The item has been installed by a licensed plumber
 - The item has been installed for and subjected to domestic residential use only
 - Failure is due to a fault in the manufacture of the product
 - Proof of purchase (including the date of purchase) is provided
 - The installation of the product is in accordance with the instructions provided

This warranty does not include faults caused by:

- Unsuitable or improper use
- Normal wear and tear
- Inadequate or complete lack of maintenance
- Chemical, electrochemical or electrical influences
- Harsh detergents or abrasive cleaners used on product finishes



Enviro-Tech Australia

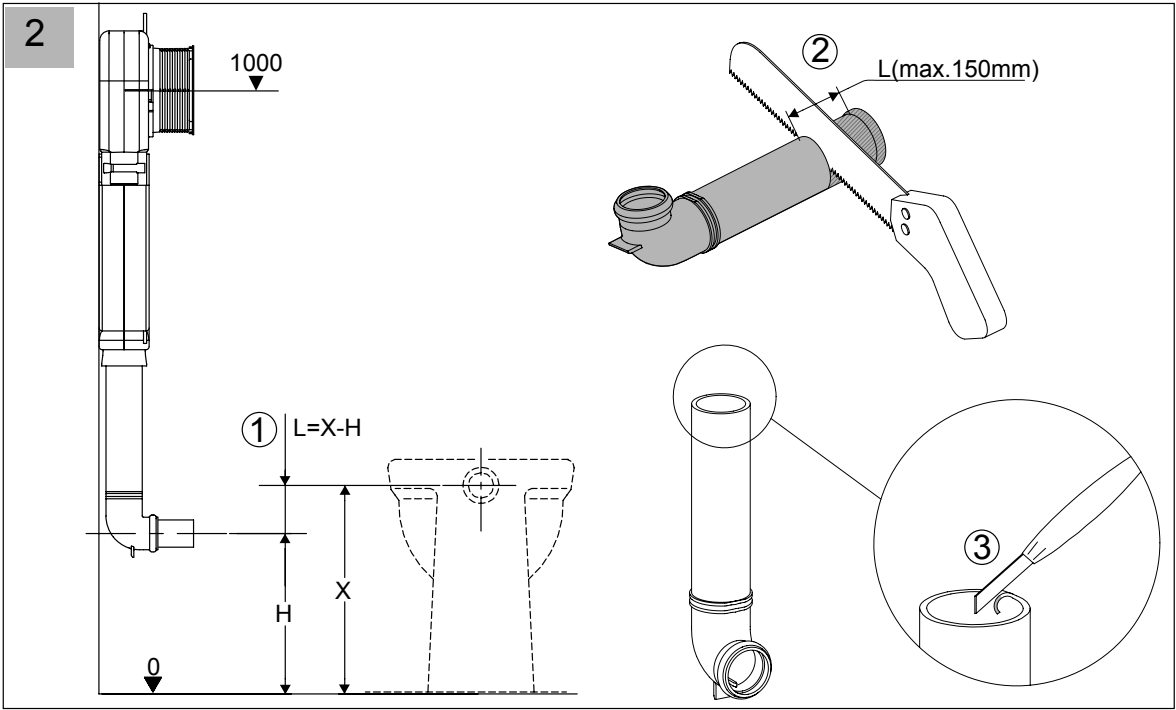
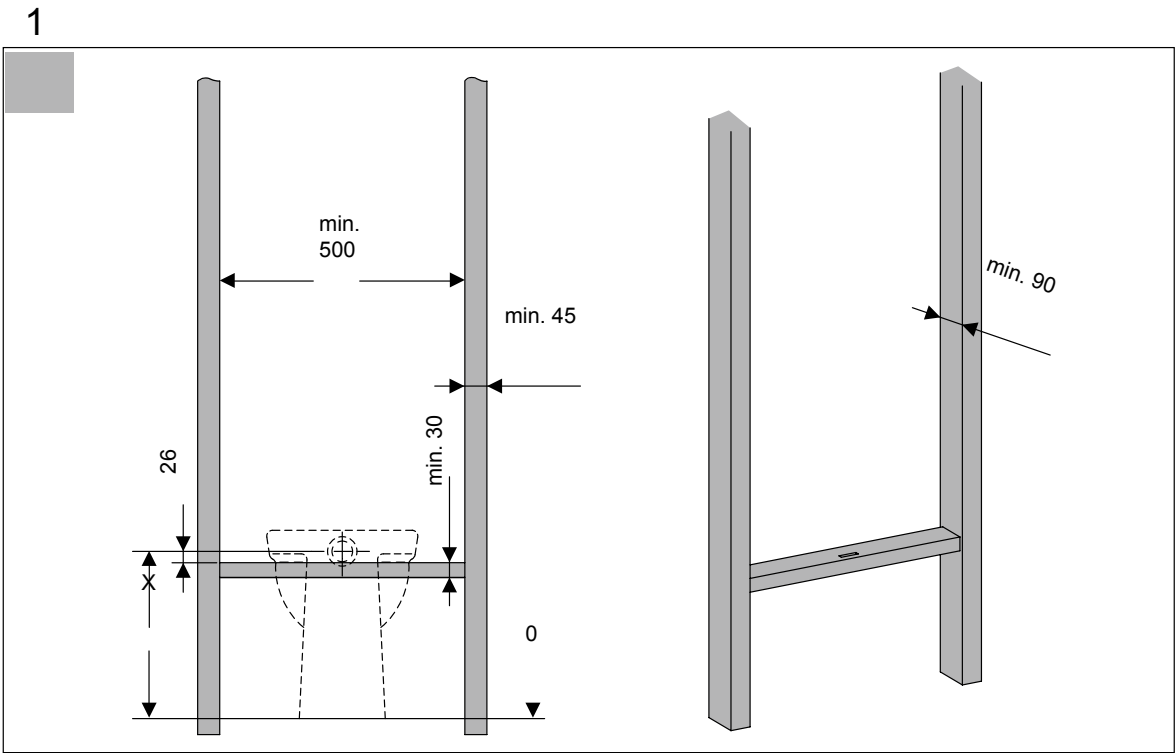
ABN 48 149 736 667
P.O. Box 458, Clayfield 4011
Queensland
Phone: 1 300 530 883
Fax: 1 300 985 668
Email: info@enviro-tech.com.au
www.enviro-tech.com.au

Enviro-Tech New Zealand

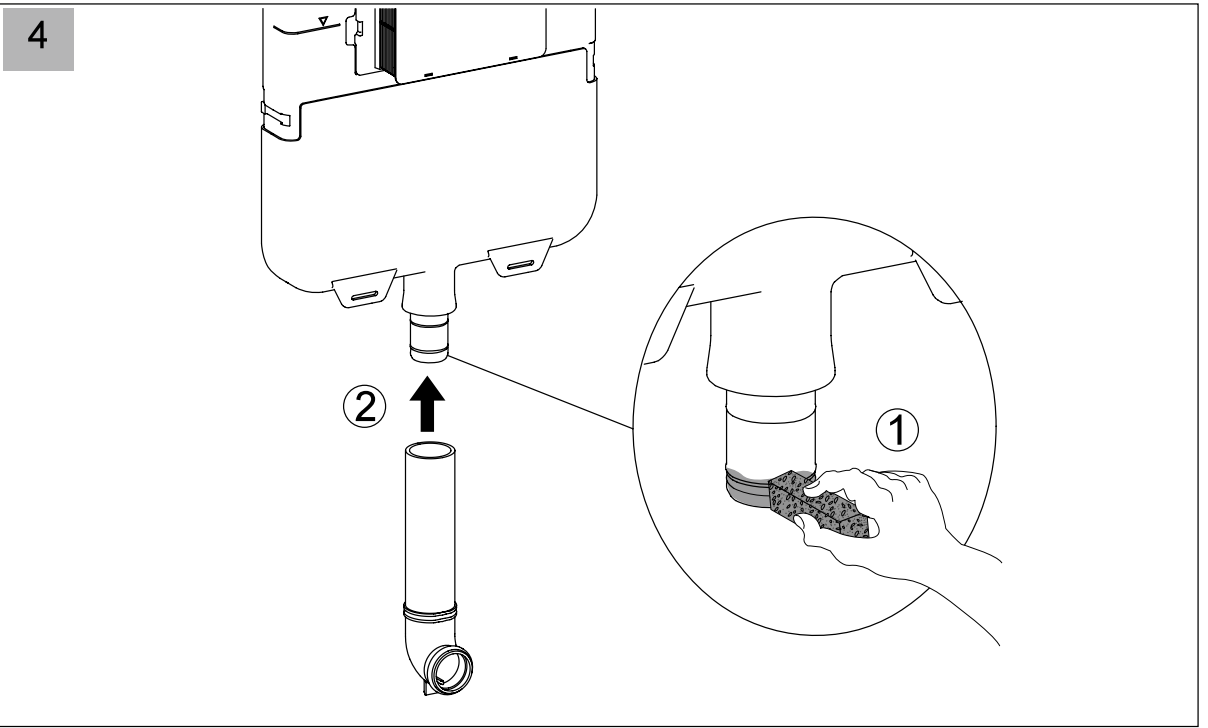
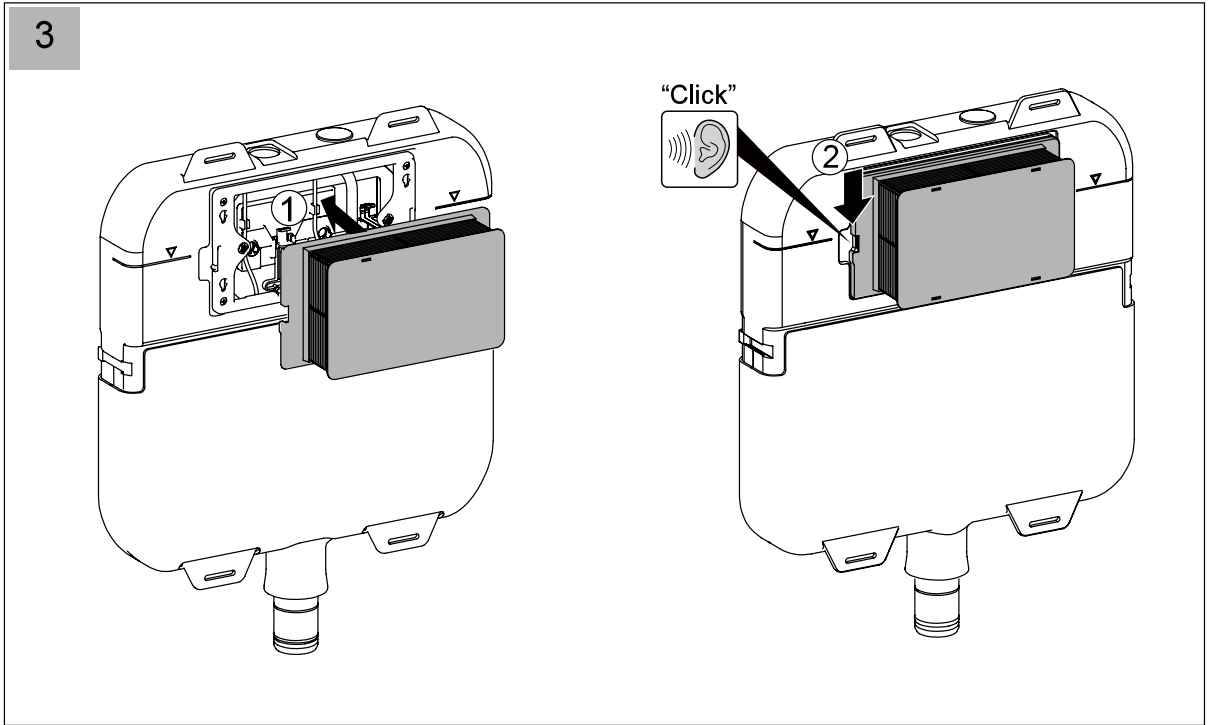
P.O. Box 6208 Marion Square
Wellington 6141
Phone: 0800 2 ENVIRO (0800 2 368476)
Fax: 04 974 7142
Email: info@enviro-tech.co.nz
www.enviro-tech.co.nz



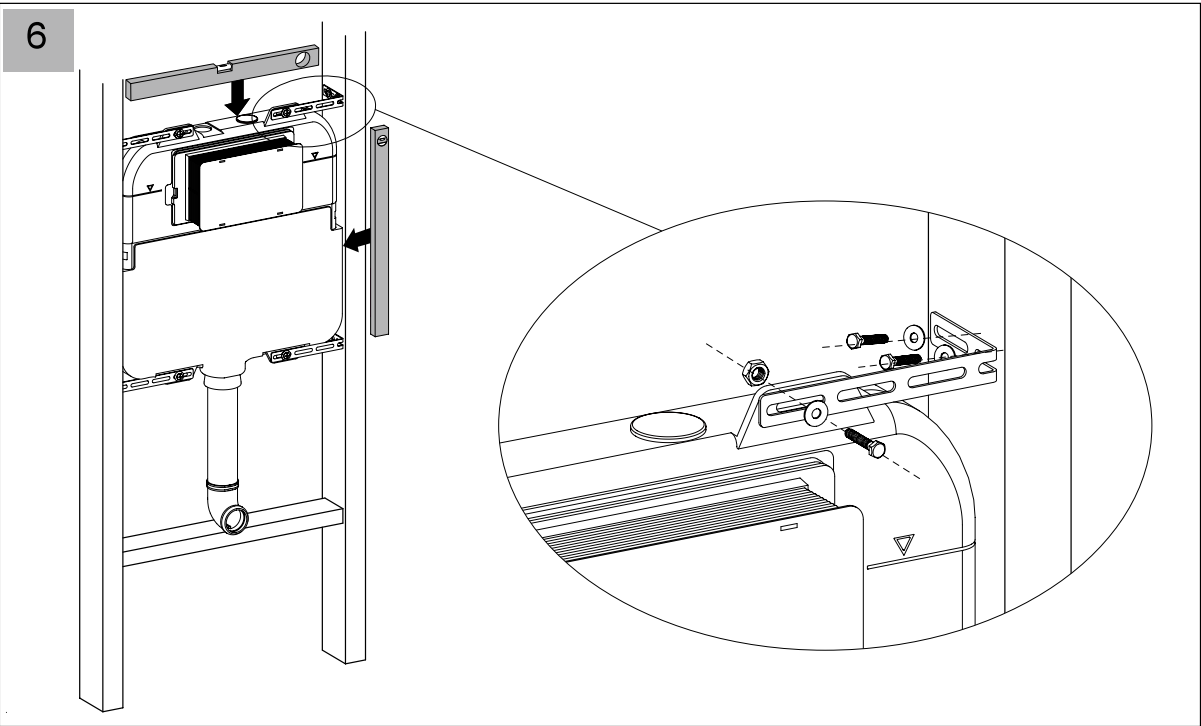
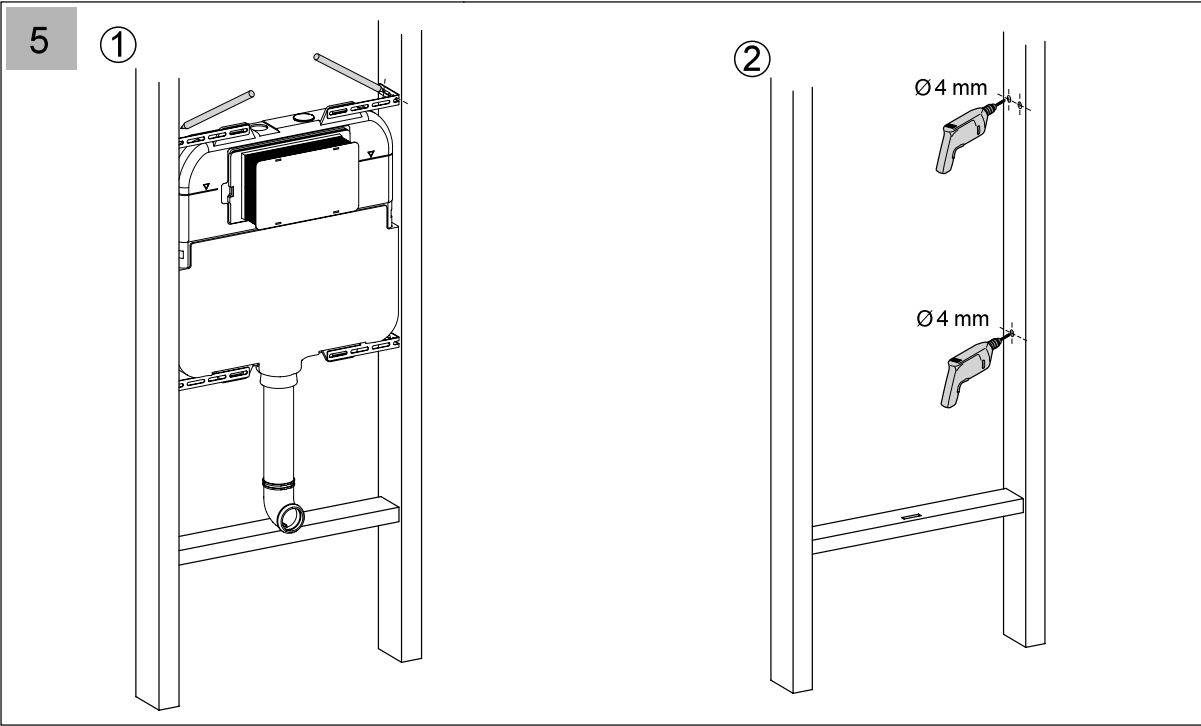
ET4-40C
CONCEALED CISTERN
INSTALLATION INSTRUCTIONS



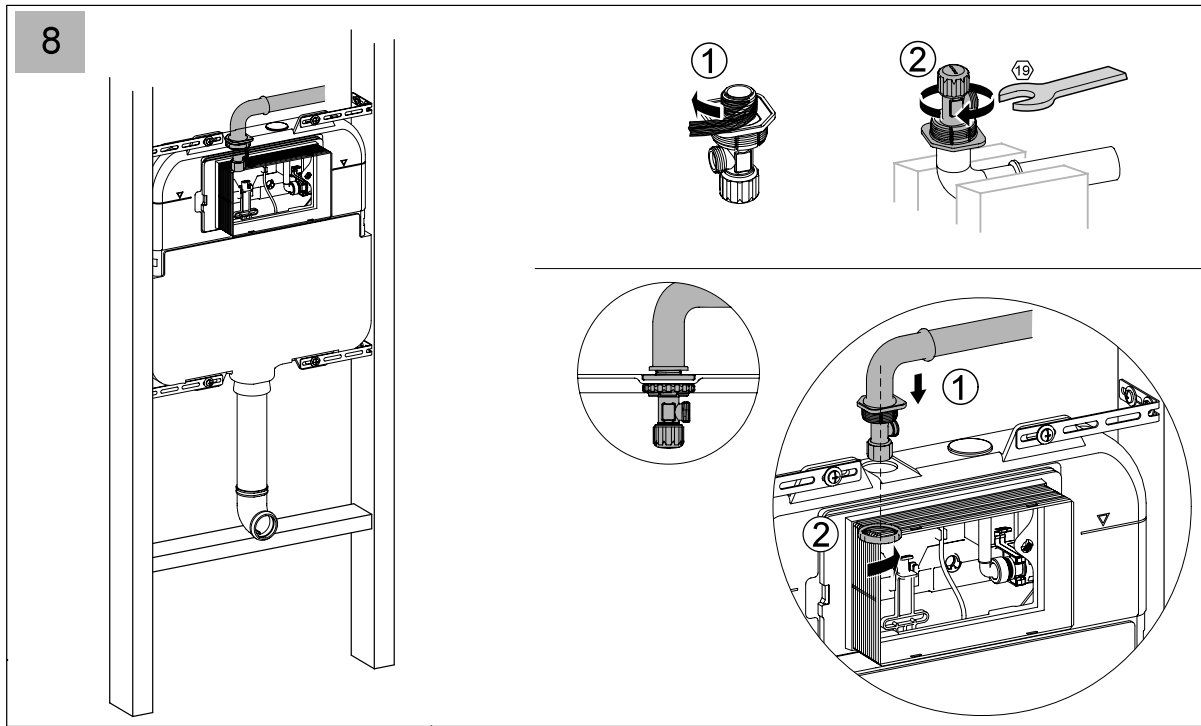
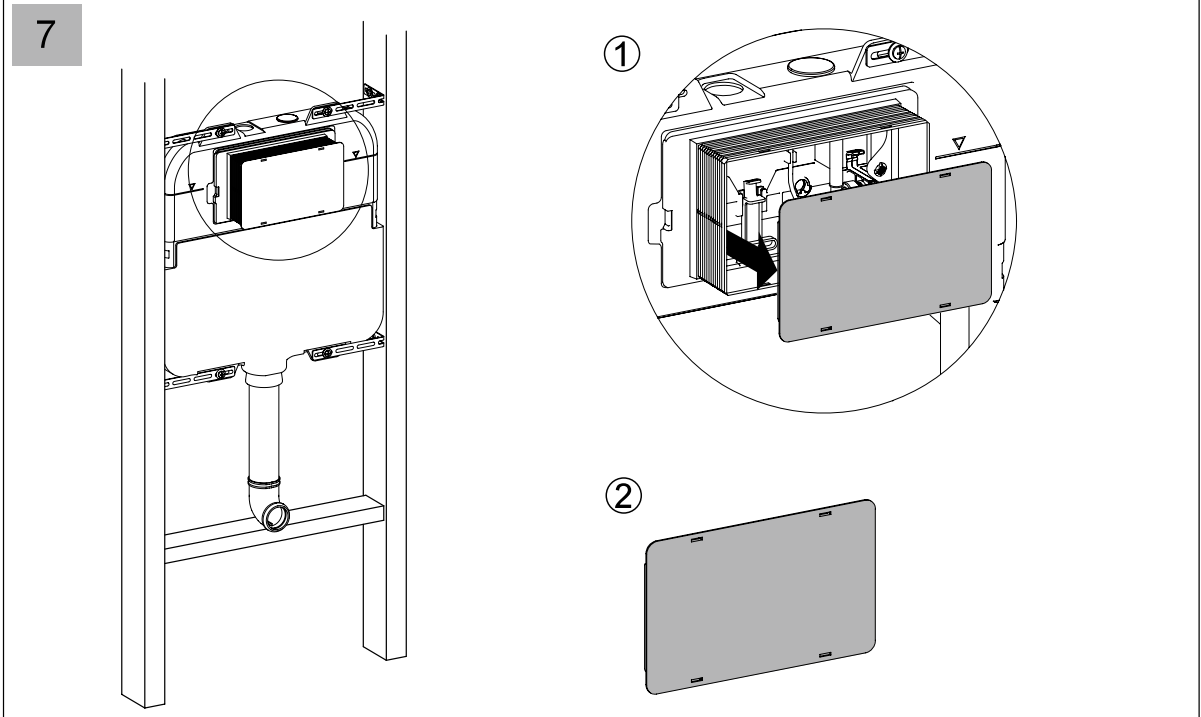
ET4-40C
CONCEALED CISTERN
INSTALLATION INSTRUCTIONS



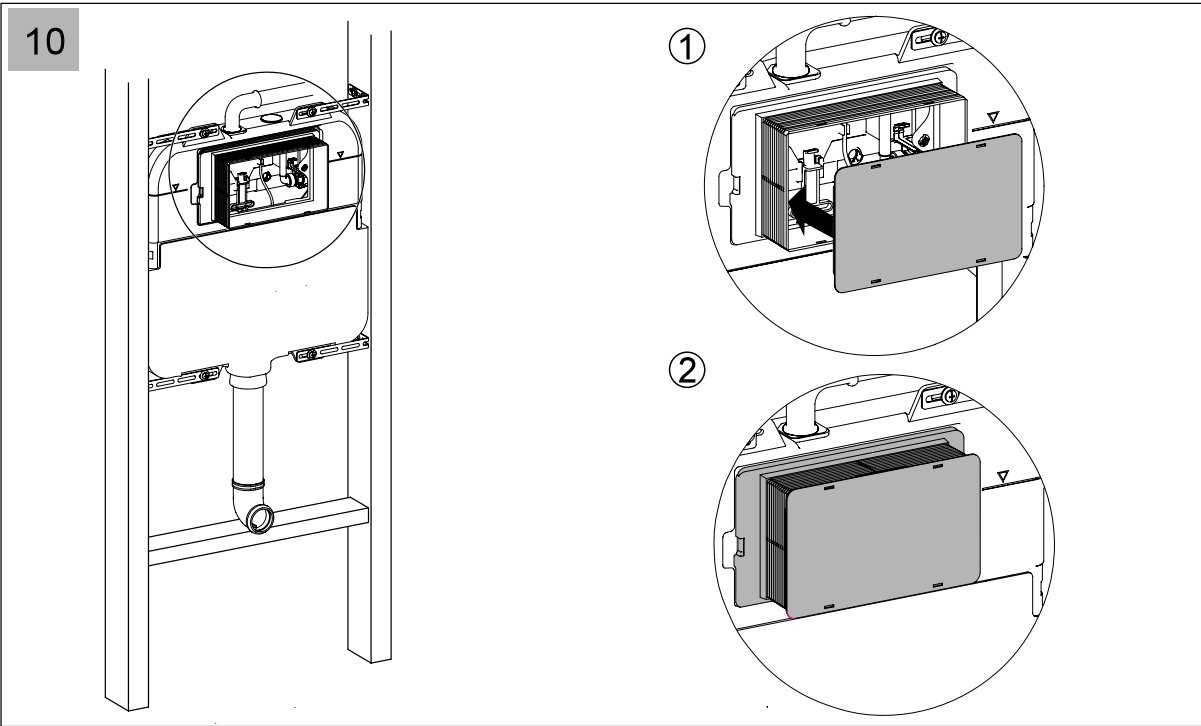
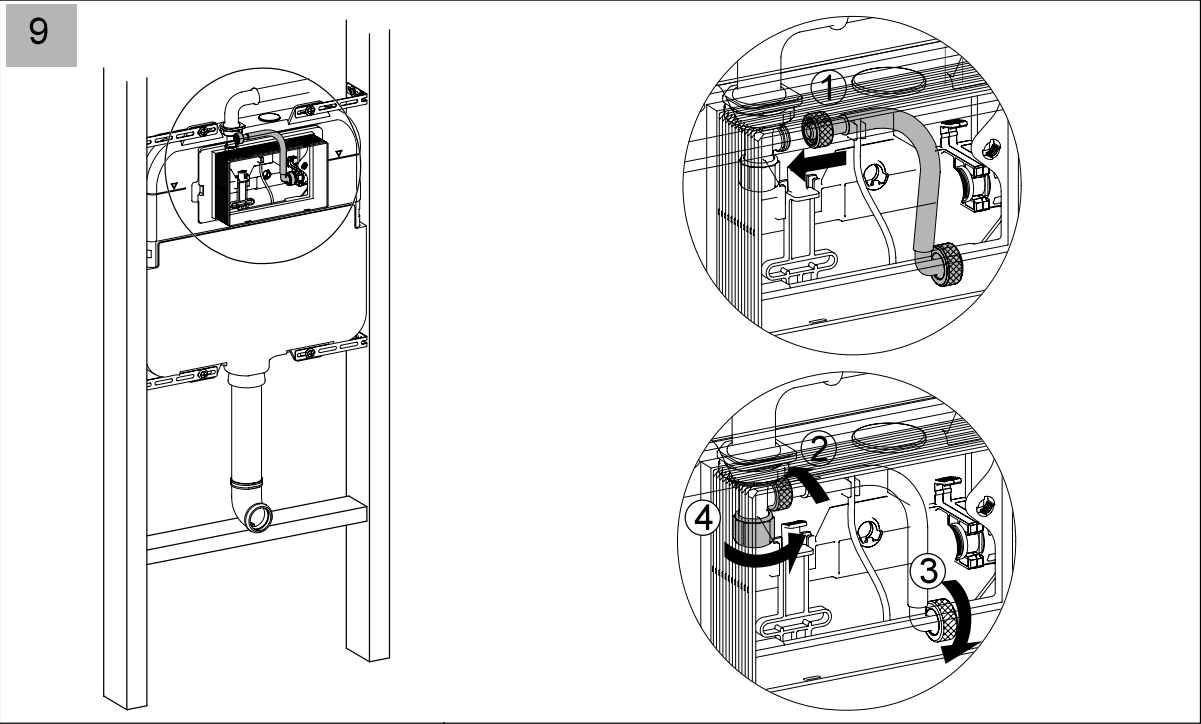
■ ET4-40C
CONCEALED CISTERN
INSTALLATION INSTRUCTIONS



■ ET4-40C
CONCEALED CISTERN
INSTALLATION INSTRUCTIONS



■ ET4-40C
CONCEALED CISTERN
INSTALLATION INSTRUCTIONS



■ ET4-40C
CONCEALED CISTERN
INSTALLATION INSTRUCTIONS

