

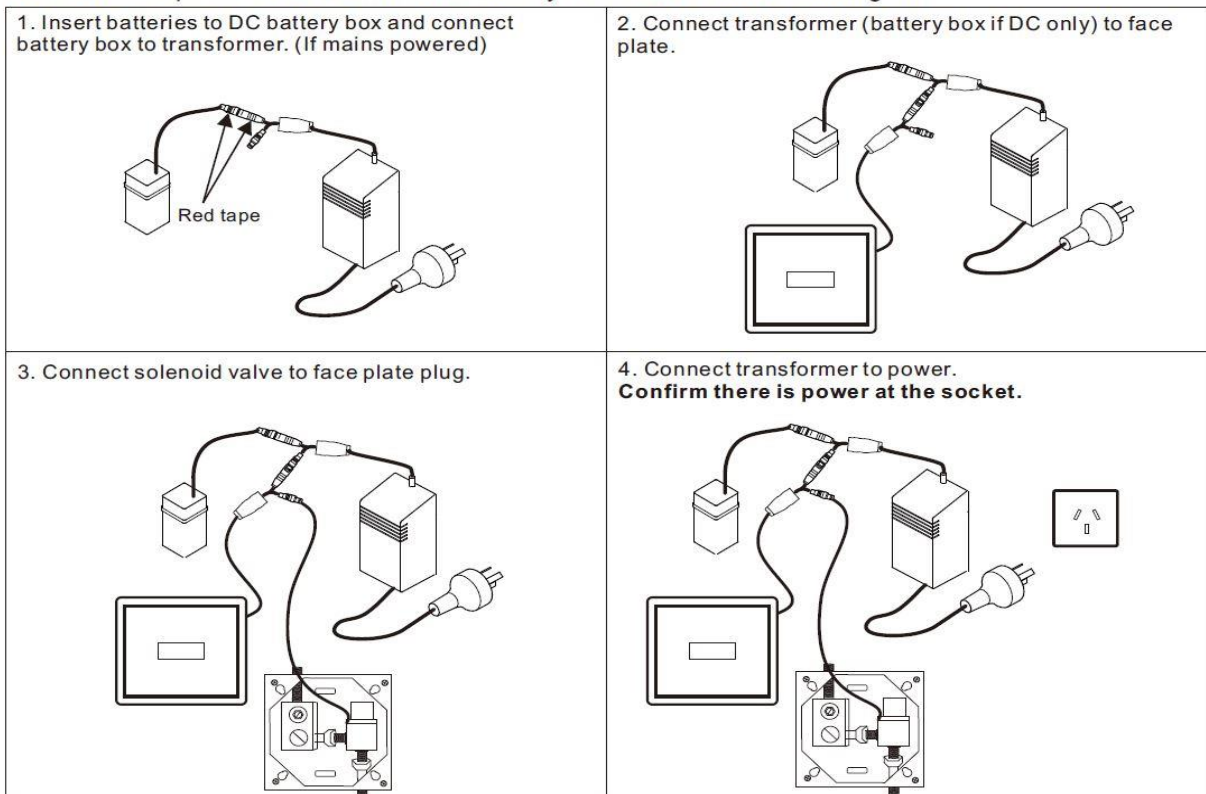
ET2-20.5 WALL MOUNTED SPOUT WITH SEPARATE SENSOR PLATE

COMMON ISSUES:

Issue - No Water Out or Water Running On

- CHECK WATER SUPPLY;
- CHECK POWER SUPPLY – WATER CONSTANTLY RUNNING ON MEANS NOT ENOUGH POWER TO OPERATE SOLENOID, EITHER POWER SUPPLY ISSUE OR INCORRECT CONNECTIONS. (SEE DIAGRAM BELOW)
- UNPLUG ALL CABLES, LEAVE UNPLUGGED FOR 5 MINUTES (THIS GIVES THE ELECTRONICS A CHANCE TO RESET) BEFORE RECONNECTING EVERYTHING CAREFULLY – IF MAINS POWERED: RECONNECT BATTERY BOX TO TRANSFORMER BEFORE SENSOR CABLE (SEE DIAGRAM BELOW);
- CHECK BATTERIES ARE INSTALLED CORRECTLY AND REPLACE WITH NEW ONES (EVEN WHEN MAINS POWERED) AS THIS WILL HIGHLIGHT ANY FAULT WITH POWER SUPPLY/OUTLET;
- CHECK SENSOR WINDOW IS CLEAN AND UNOBSTRUCTED;
- IF RED LIGHT IS INDICATING AND YOU CAN HEAR THE SOLENOID CLICKING BUT NO WATER IS COMING OUT – VALVE IS BLOCKED OR OBSTRUCTED;
- CLEAN VALVE AND RE-TEST.

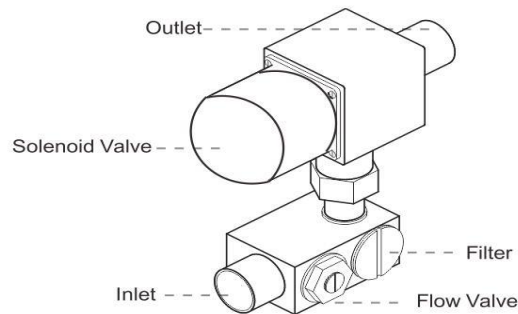
WARNING: If parts are connected incorrectly electronics can be damaged!



NOTE: If red light is on or flashing, this indicates that unit is functioning correctly, although there may not be sufficient power to activate the solenoid. A flashing red light indicates that batteries are low and need replacing.

Issue – Not Enough or Too Much Water Flow

- CHECK AND ADJUST YOUR WATER PRESSURE AS APPROPRIATE – MAXIMUM OF 500kPA;
- THE FILTER/SOLENOID MAY BE BLOCKED, CLEAN AND RE-TEST;
- FLOW VALVE MAY REQUIRE ADJUSTMENT – FLOW CAN BE ADJUSTED WITH FLOW VALVE SCREW ON SOLENOID VALVE, NEXT TO THE INLET – SEE DIAGRAM:

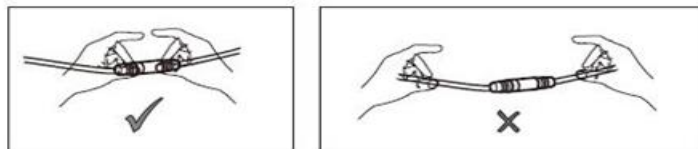


Issue – Run Time/Sensing Distance Not Adequate

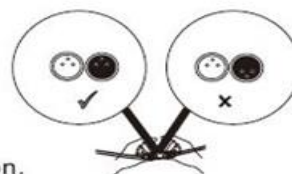
- SENSOR DISTANCE MAY REQUIRE SET-UP/ADJUSTMENT (SEE INSTRUCTIONS AND DIAGRAMS BELOW).

Sensor Adjustment:

- REMEMBER YOU ARE DEALING WITH DELICATE ELECTRONICS AND CARE SHOULD BE TAKEN TO ENSURE THEY ARE NOT DAMAGED;
- TO ACCESS/ADJUST THE SENSOR – REMOVE THE STAINLESS-STEEL FACEPLATE AND CAREFULLY DISCONNECT THE SENSOR PLUGS FROM THE SOLENOID AND THE POWER SUPPLY;

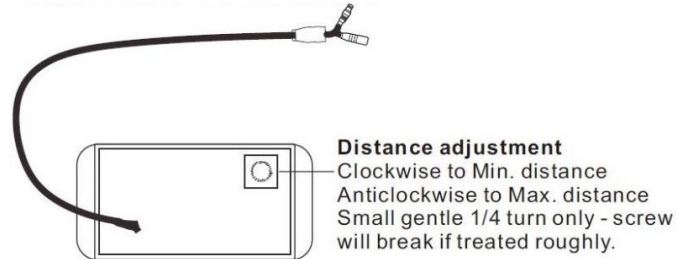


Attention:
Hold the plug not the wire to connect and disconnect and make sure the pins align to the holes in the right position.



- REMOVE THE METAL PLATE COVERING THE SENSOR;

- FOLLOWING THE DIAGRAM INSTRUCTIONS BELOW, ADJUST SENSOR AS APPROPRIATE USING A SMALL CROSS HEAD SCREWDRIVER AND GENTLE $\frac{1}{4}$ TURNS;



- CAREFULLY REASSEMBLE AND RE-TEST. REPEAT STEPS AS NECESSARY.

Issue – Self-Activation

All infra-red technology can be affected by strong or directional light, reflective surfaces or high-vis clothing. This is due to environmental factors and is not a product fault. Ensure users are not wearing high-vis clothing and consider making changes to the lighting and/or fittings used in the bathroom to rectify this issue.

For further information and advice - contact us on:
1300 530 883 or e-mail info@enviro-tech.com.au